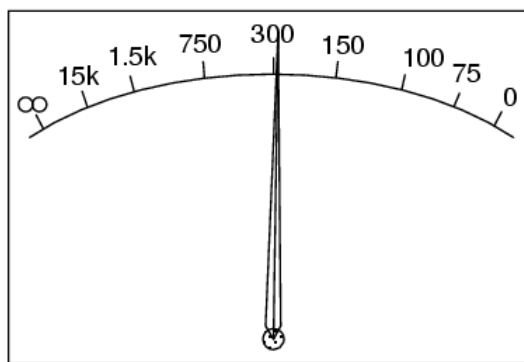
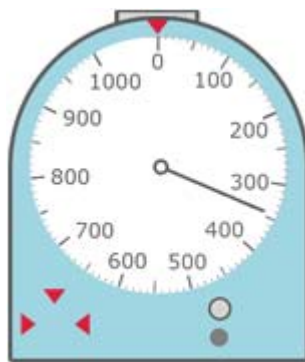


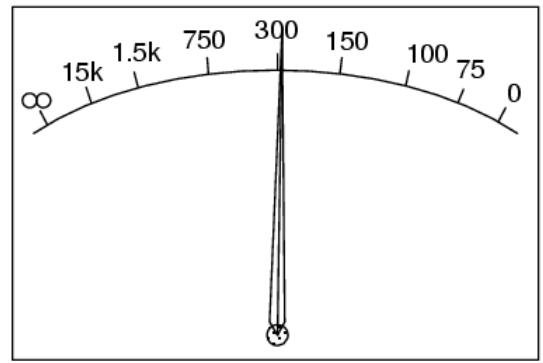
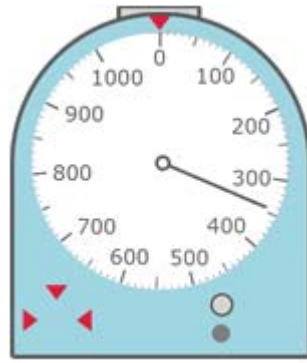
Basic Units Practice #1



1. Give the reading shown on the dial on the left:
2. Give the reading shown on the dial on the right:
3. What instrument measures body weight?
4. What is freezing point of ice in standard units?
5. Is the Auckland Sky Tower: 3280 m, 328 m or 32.8 m high?
6. What is 345 m in km?
7. What is 8000 mm in m?
8. What is 44 g in kg?
9. What is 9.5 g in mg?
10. What is 345 kg in tonnes?
11. What is 90 seconds in minutes?
12. What is $5\frac{1}{2}$ hours in minutes?
13. What is 400 minutes in hours?
14. What is 5.5 hours in minutes?
15. What is 276 seconds in minutes, as a decimal?
16. How long is it from 9:40 a.m. to 11:50 a.m.?
17. How long is it from 10:20 a.m. to 1:50 p.m.?
18. How long is it from 9:55 p.m. to 8:35 a.m.?
19. What is ten to three in the afternoon in 24 hour time?
20. What is 0645 in normal time?

Answers: Basic Units

Practice #1



Note: don't leave out units

1. Give the reading shown on the dial on the left: **between 340 and 345**
2. Give the reading shown on the dial on the right: **about 280 or 290**
3. What instrument measures body weight? **scales**
4. What is freezing point of ice in standard units? **0°C**
5. Is the Auckland Sky Tower: 3280 m, 328 m or 32.8 m high? **328 metres high**
6. What is 345 m in km? **0.345 km**
7. What is 8000 mm in m? **8 m**
8. What is 44 g in kg? **0.044 kg**
9. What is 9.5 g in mg? **9500 mg**
10. What is 345 kg in tonnes? **0.345 tonnes**
11. What is 90 seconds in minutes? $\frac{90}{60} = 1\frac{30}{60} = 1\frac{1}{2}$ or **1.5 minutes**
12. What is $5\frac{1}{3}$ hours in minutes? $5\frac{1}{3} \times 60 = 320$ minutes
13. What is 400 minutes in hours? $\frac{400}{60} = 6\frac{40}{60} = 6\frac{2}{3}$ or **6.67 hours**
14. What is 5.5 hours in minutes? $5.5 \times 60 = 330$ minutes
15. What is 276 seconds in minutes, as a decimal? $276 \div 60 = 4.6$ minutes
16. How long is it from 9:40 a.m. to 11:50 a.m.? **2 hours 10 minutes (or 130 minutes)**
17. How long is it from 10:20 a.m. to 1:50 p.m.? **$3\frac{1}{2}$ hours (or 210 minutes)**
18. How long is it from 9:55 p.m. to 8:35 a.m.? **10 hours 40 minutes**
19. What is ten to three in the afternoon in 24 hour time? **1450 (hours) or 14:50**
20. What is 0645 in normal time? **6:45 a.m. or a quarter to seven in the morning**